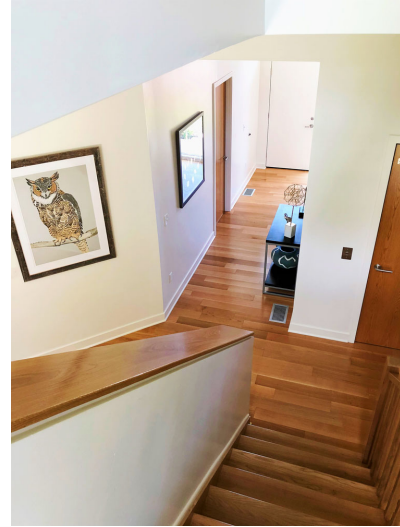




Winner - Associated Builders & Contractors of NJ 2018
Excellence in Construction – Eagle Award

INSTITUTE FOR ADVANCED STUDY (IAS) FACULTY TOWNHOMES

Princeton, New Jersey



- Residential Construction for Academic Institution
- Construction Management and Value Engineering
- Preconstruction started January 2017
- Construction completed May 2018
- 8 high-end faculty townhomes adjacent to the IAS campus and Institute Woods and Farmlands.
- 32,000 square feet
- Studio Hillier - Princeton, NJ



Project Mission:

Provide Construction Management and VE services for this prestigious academic institution with high standards. Ingress and egress of construction vehicles would be monitored for the safety and protection of the neighboring residential areas and pristine park land. Construction quality had to meet the exacting standards of the client, architect, and engineering team.

Highlights included:

- Merit Shop
- Preconstruction & value engineering services resulted in positive cost and schedule impact
- Working with many stakeholders
- Proactive supervision and synchronization of trades
- Coordination of construction vehicles through adjacent residential areas to avoid fines
- Significant dewatering infrastructure network
- Completed on-time and on budget
- Sweetwater's attention to detail resulted in a minimal quality control issues.
- No injuries or OSHA safety infractions